

Figure 4. Semitrailer, low bed: wrecker, 270-right rear view.

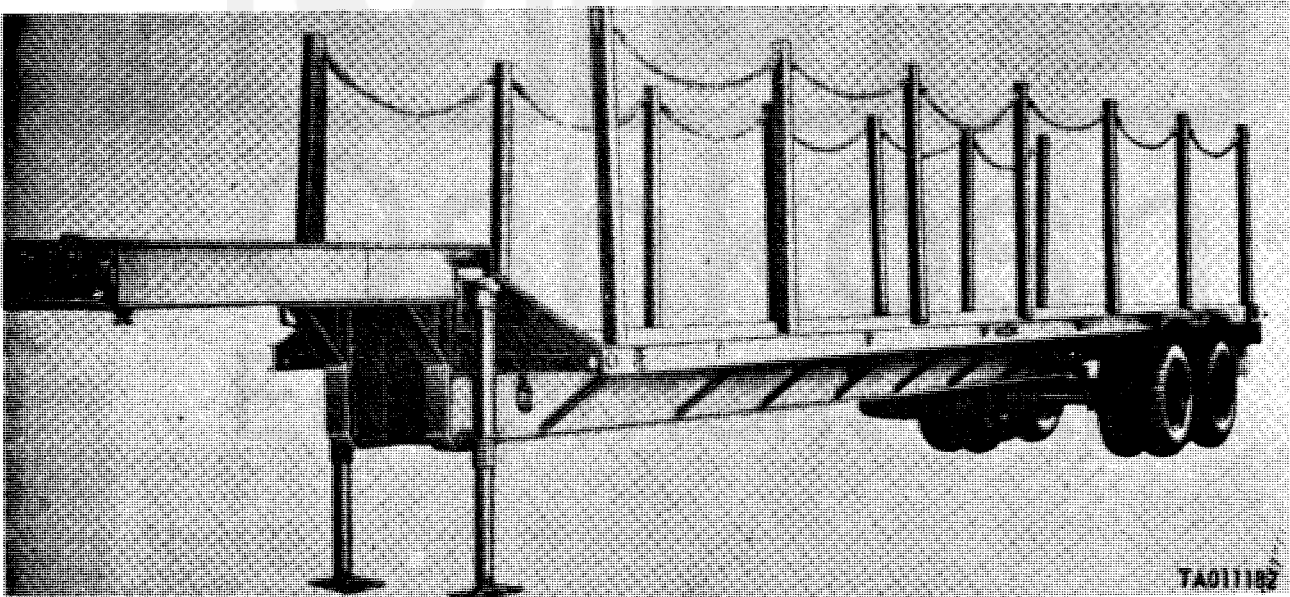
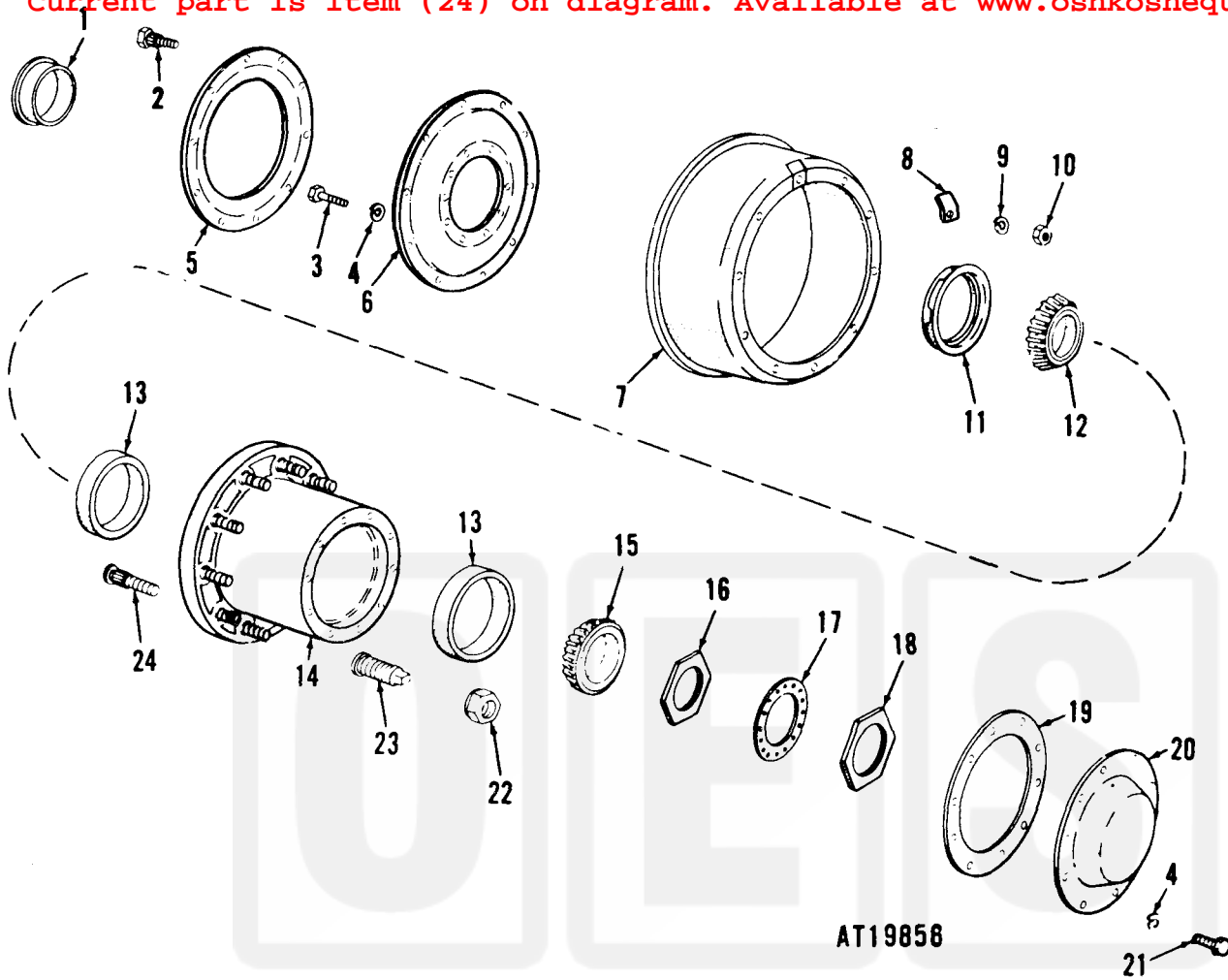


Figure 5. Semitrailer, low bed: wrecker, M269A1-left front view.

(1) SMR CODE	(2) FEDERAL STOCK NUMBER	(3) DESCRIPTION  REFERENCE NUMBER & MFR CODE	(4) UNIT OF MEAS	(5) QTY INC IN UNIT	(6) 15-DAY ORGANIZATION MAINTENANCE ALLOWANCE				(7) 30-DAY DS MAINTENANCE ALLOWANCE			(8) 30-DAY GS MAINTENANCE ALLOWANCE			(9) 1-YR. ALW PER 100 EQUIP CNTGCGY PLANNING	(10) ILLUSTRATION	
					(A) 1-5	(B) 6-20	(C) 21-50	(D) 51-100	(A) 1-20	(B) 21-50	(C) 51-100	(A) 1-20	(B) 21-50	(C) 51-100		(A) FIG NO	(B) ITEM NO
PAOZZ	5310-053-7808	NUT, CAP, SELF-LOCKING, HEX: 1 1/8-16NF-2, LB 537808 (24617)	EA	20	*	*	*	*	*	*	*	*	*	*	25	22	
PAOZZ	5310-880-2005	NUT, CAP, HEX: 1 1/8 -16NF-2, RH MS51983-4 (96906)	EA	20	*	*	*	*	*	*	*	*	*	*	25	22	
PAOZZ	2530-693-1029	NUT, CAP: 3/8-16NF-2. LB INNER THD, 11/8-16NS-3. LH OUTER THD 537810 (81793)	EA	20	*	*	*	*	*	*	*	*	*	*	25	23	
PAOZZ	2530-359-1162	NUT, CAP: 3/8-16NF-2, RH INNER THD. 1-1/8-16NS-3 RH OUTER THD 537809 (24617)	EA	20	*	*	*	*	*	*	*	*	*	*	25	23	
PAOZZ	5306-797-9320	BOLT, RIBBED: 3/8-16NF X 3. LH MS51946-5 (96906)	EA	20	*	*	*	*	*	*	*	*	*	*	25	24	
PAOZZ	5306-740-9555	BOLT, RIBBED: 3/8-16NF X 3. RH MS51946-6 (96906)	EA	20	*	*	*	*	*	*	*	*	*	*	25	24	
PAOZZ	2530-740-9395	HUB ASSY: W BRG CUPS A333U801 (78500)	EA	4	*	*	*	*	*	*	*	*	*	*	25		
PAOZZ	5310-053-7808	1311-HUBS AND DRUMS NUT, PLAIN, HEX: 11/8-16NF-2. LH THD 537808 (24617)	EA	20	*	*	*	*	*	*	*	*	*	*	26	1	
PAOZZ	5310-880-2005	NUT, PLAIN, HEX: 11/8-16NF-2, RH THD MS51983-4 (96906)	EA	20	*	*	*	*	*	*	*	*	*	*	26	1	
PAOZZ	2530-359-1162	NUT, CAP, HEX: 3/8-16NF-2, LH INNER THD. 11/8- 16NS-3 OUTER THD 537810 (81793)	EA	20	*	*	*	*	*	*	*	*	*	*	26	2	
PAOZZ	2530-693-1029	NUT, CAP, HEX: 3/8-16NF-2 INNER THD. 11/8-16NS- 3 OUTER THD 537809 (24617)	EA	20	*	*	*	*	*	*	*	*	*	*	26	2	
PAOZZ	5305-225-8494	SCREW, CAP, HEX HD: 5 16-18UNC-2A X 1/2 MS90725-29 (96906)	EA	24	*	*	*	*	*	*	*	*	*	*	26	3	
PAOZZ	5310-407-9566	WASHER, LOCK, SPLIT: 5 15 ID MS35338-45 (96906)	EA	24	*	*	*	*	*	*	*	*	*	*	26	4	
PAOZZ	2530-287-8220	CAP, GREASE: WHEEL HUB 8710725 (19207)	EA	4	*	*	*	*	*	*	*	*	*	*	26	5	
PAOZZ	5330-290-8521	GASKET, GREASE CAP: CORK 8710726 (19207)	EA	4	*	*	*	*	*	*	*	*	*	*	26	6	
PAOZZ	5310-353-2427	NUT, PLAIN, OCTAGON: OUTER WHEEL BRG JAM 7979263 (19207)	EA	4	*	*	*	*	*	*	*	*	*	*	26	7	
PAOZZ	5310-700-7089	WASHER, KEY: HUB BRG ADJ LOCK 5139123 (19207)	EA	4	*	*	*	*	*	*	*	*	*	*	26	8	

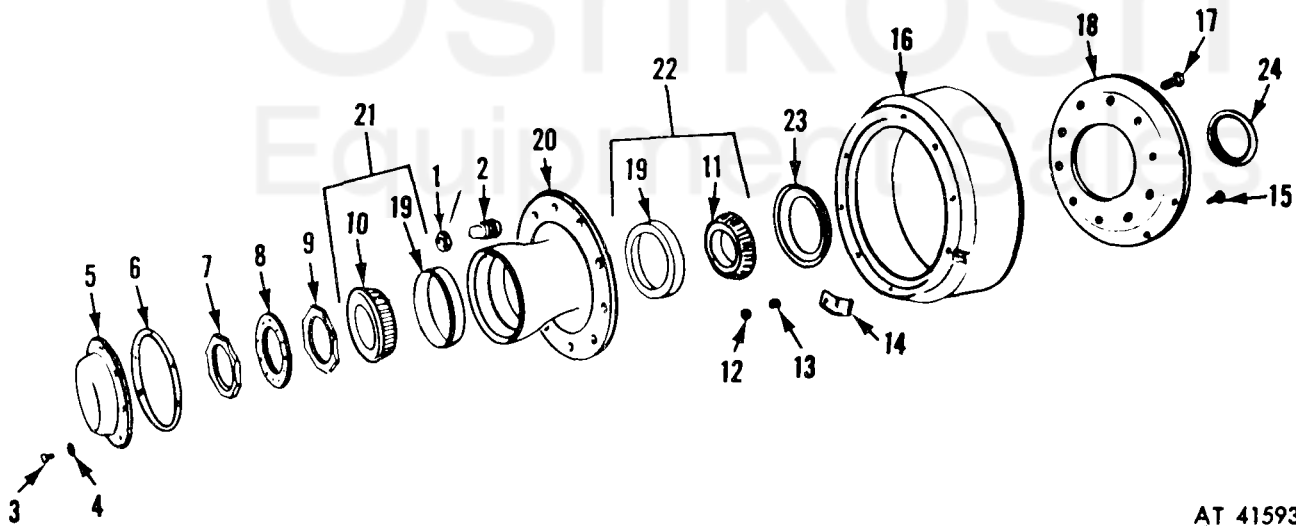
Oshkosh  
Equipment Sales

Current part is item (24) on diagram. Available at [www.oshkoshequipment.com](http://www.oshkoshequipment.com)



AT19856

Figure 25. Hub and drum assembly—M269, M270.



AT 41593

Figure 26. Hub and drum assembly—269A1, M270A1.

Current part is item (24) on diagram. Available at [www.oshkoshequipment.com](http://www.oshkoshequipment.com)